

## CERTIFICATE OF ANALYSIS

### PRODUCT IDENTIFICATION

<b>CLIENT:</b> SP - PHYTOCOSMO 20%	<b>LOT</b> 1_11_20_S831
<b>RAW MATERIAL:</b> PCR Broad Spectrum Hemp Extract 85%	
<b>RAW MATERIAL BATCH:</b> SL-21-BSE-02	
<b>PRODUCT NAME:</b> Bulk Oil - BS/MCT - 20% - 1L – (prod 831)	
<b>BATCH:</b> SLWL-21-BSE-02-002	<b>DDM :</b> 05/2023

### ORGANOLEPTIC ANALYZES

**APPEARANCE AND COLOR:** Viscous liquid, brown

**ODOR AND TASTE:** Conform to the standard

### PHYSICO-CHEMICAL ANALYSIS

**DENSITY (d20/20):** 0.965 ± 0.003

**QUANTITATIVE ANALYSIS :** HPLC Agilent 1220

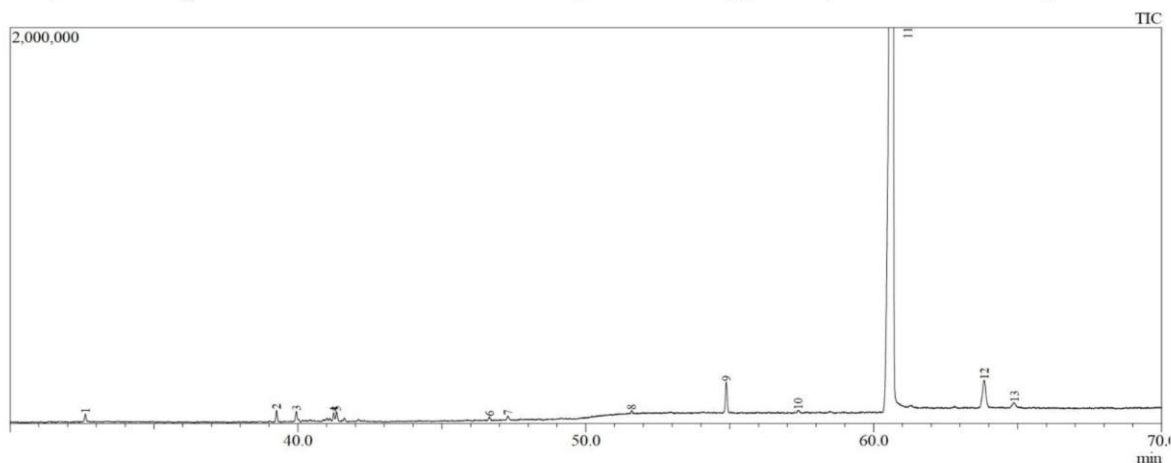
Analyte	Method	LOD %	LOQ %	Mass %w-v
CBD	HPLC-LEAF04-SE	0.0242	0.0808	20.352
Δ9-THC	HPLC-LEAF04-SE	0.0242	0.0808	ND
CBG	HPLC-LEAF04-SE	0.0242	0.0808	ND
CBN	HPLC-LEAF04-SE	0.0242	0.0808	ND
THCV*	-	-	-	ND
Δ8-THC*	-	-	-	ND

ND : not detected

NQ : not quantified

*\*When analyzing the composition of the raw material batch SL-21-BSE-02 (GC-MS, LOD 500ppm), we did not detect THCV (Tetrahydrocannabivarin) and Δ8-THC (Δ8-Tetrahydrocannabinol). We can therefore extrapolate by asserting that the finished product does not contain these two molecules.*

Composition Analysis carried out on raw material batch *(SL-21-BSE-02)* (GC/MS) : GC/MS Shimadzu QP 2010 SE



#Peak	Ret. Time (min)	Area % (relative %)	Name	Type of compound
1	32.615	0.32	Isocaryophyllene	Terpene
2	39.255	0.48	1(5)-Guaiene-11-ol	Terpene
3	39.943	0.47	Eudesmol <epi-γ->	Terpene
4	41.246	0.32	Bulnesol	Terpene
5	41.346	0.38	β-Eudesmol	Terpene
6	46.653	0.15	Cryptomeridiol	Terpene
7	47.296	0.15	Cryptomeridiol	Terpene
9	54.884	1.42	Cannabidivarin (CBDV)	Cannabinoid
11	60.659	93.43	Cannabidiol (CBD)	Cannabinoid
12	63.845	2.27	Cannabielsoin (CBE)	Cannabinoid

By : Maxime GODFROY

R&D Manager – PhD in Organic Chemistry

2021.11.22  
13:26:49  
+01'00'

LABORATOIRE D'ÉTUDES ET D'ANALYSES DES FLUIDES

Laboratoire d'Etudes et d'Analyses des Fluides (LEAF)

31-33 rue du 8 Mai 1945 – 94470 BOISSY SAINT LEGER

Tel : 01 43 39 15 23 / E-mail : [contact@lab-leaf.com](mailto:contact@lab-leaf.com)

n° SIRET : 818 276 651 00028 – Au capital de 15 000€