

## CERTIFICATE OF ANALYSIS

### PRODUCT IDENTIFICATION

<b>CLIENT:</b> SP - PHYTOCOSMO 5%	<b>LOT</b> 1_11_5_S829
<b>RAW MATERIAL:</b> PCR Broad Spectrum Hemp Extract 85%	
<b>RAW MATERIAL BATCH:</b> SL-21-BSE-02	
<b>PRODUCT NAME:</b> Bulk Oil - BS/MCT - 5% - 1L – (prod 829)	
<b>BATCH:</b> SLWL-21-BSE-02-002	<b>DDM :</b> 05/2023

### ORGANOLEPTIC ANALYZES

<b>APPEARANCE AND COLOR:</b> Viscous liquid, brown
<b>ODOR AND TASTE:</b> Conform to the standard

### PHYSICO-CHEMICAL ANALYSIS

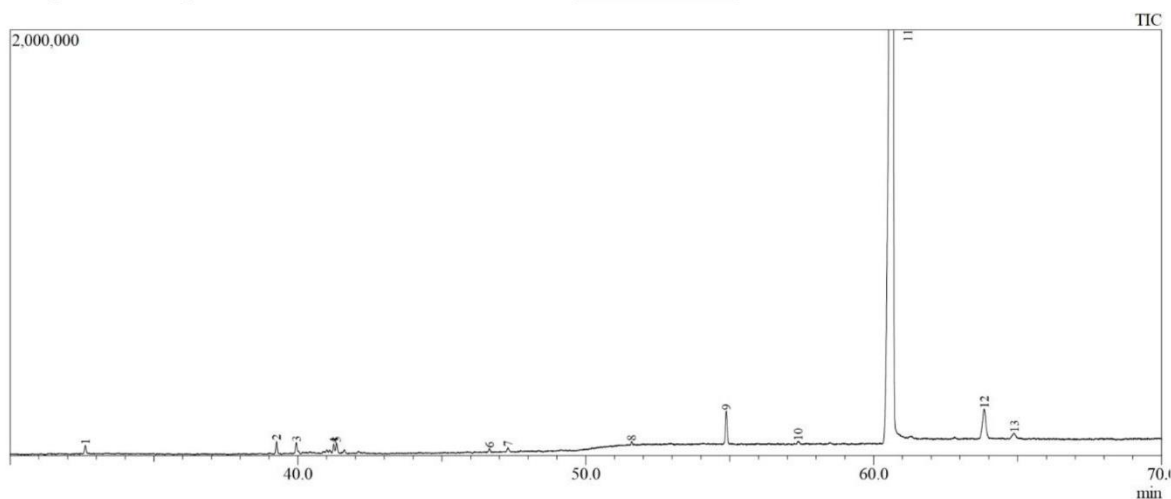
**DENSITY (d<sub>20/20</sub>):** 0.945 ± 0.003

**QUANTITATIVE ANALYSIS :** HPLC Agilent 1220

Analyte	Method	LOD %	LOQ %	Mass %w-v
CBD	HPLC-LEAF04-SE	0.0235	0.0784	5.125
Δ <sup>9</sup> -THC	HPLC-LEAF04-SE	0.0235	0.0784	ND
CBG	HPLC-LEAF04-SE	0.0235	0.0784	ND
CBN	HPLC-LEAF04-SE	0.0235	0.0784	ND
THCV*	-	-	-	ND
Δ <sup>8</sup> -THC*	-	-	-	ND
ND : not detected				
NQ : not quantified				

*\*When analyzing the composition of the raw material batch SL-21-BSE-02 (GC-MS, LOD 500ppm), we did not detect THCV (Tetrahydrocannabivarin) and Δ<sup>8</sup>-THC (Δ<sup>8</sup>-Tetrahydrocannabinol). We can therefore extrapolate by asserting that the finished product does not contain these two molecules.*

Composition Analysis carried out on raw material batch (*SL-21-BSE-02*) (GC/MS) : GC/MS Shimadzu QP 2010 SE



#Peak	Ret.Time (min)	Area % (relative %)	Name	Type of compound
1	32.615	0.32	Isocaryophyllene	Terpene
2	39.255	0.48	1(5)-Guaiene-11-ol	Terpene
3	39.943	0.47	Eudesmol <epi-γ->	Terpene
4	41.246	0.32	Bulnesol	Terpene
5	41.346	0.38	β-Eudesmol	Terpene
6	46.653	0.15	Cryptomeridiol	Terpene
7	47.296	0.15	Cryptomeridiol	Terpene
9	54.884	1.42	Cannabidivarin (CBDV)	Cannabinoid
11	60.659	93.43	Cannabidiol (CBD)	Cannabinoid
12	63.845	2.27	Cannabielsoin (CBE)	Cannabinoid

By : Maxime GODFROY

R&D Manager – PhD in Organic Chemistry

2021.11.22  
 13:24:44  
 +01'00'

**LEAF**  
 LABORATOIRE D'ÉTUDES ET  
 D'ANALYSES DES FLUIDES