

CERTIFICATE OF ANALYSIS

n°2022-OA6717

PRODUCT IDENTIFICATION

CLIENT: SP - PHYTOCOSMO 10%

LOT 1_06_10_S1611

RAW MATERIAL: PCR Broad Spectrum Hemp Extract 85%

RAW MATERIAL BATCH: SL-21-BSE-02-001

PRODUCT NAME: Bulk Oil - BS/MCT - 10% - 1L – (prod 1611)

BATCH: SEWL-22-BSE-02-001

DDM : 06/2024

ORGANOLEPTIC ANALYZES

APPEARANCE AND COLOR: Viscous liquid, orange

ODOR AND TASTE: Conform to the standard

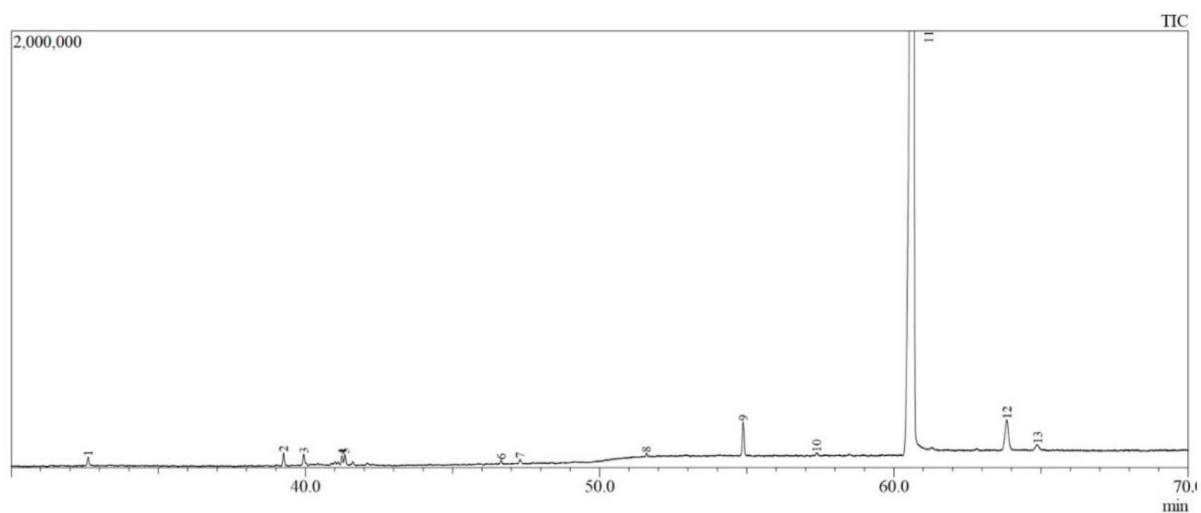
PHYSICO-CHEMICAL ANALYSIS

DENSITY (d20/20): 0.954 ± 0.003

QUANTITATIVE ANALYSIS : HPLC Agilent 1220

Analyte	Method	LOD %	LOQ %	Mass %w-v
CBD	HPLC-LEAF06-SE	0.0600	0.2000	10.596
Δ9-THC	HPLC-LEAF06-SE	0.0600	0.2000	ND
CBG	HPLC-LEAF06-SE	0.0600	0.2000	ND
CBN	HPLC-LEAF06-SE	0.0600	0.2000	ND
THCV*	-	-	-	ND
Δ8-THC*	-	-	-	ND
ND : not detected				
NQ : not quantified				

**When analyzing the composition of the raw material batch SL-21-BSE-02 (GC-MS, LOD 500ppm), we did not detect THCV (Tetrahydrocannabivarin) and Δ8-THC (Δ8-Tetrahydrocannabinol). We can therefore extrapolate by asserting that the finished product does not contain these two molecules.*



#Peak	Ret. Time (min)	Area % (relative %)	Name	Type of compound
1	32.615	0.32	Isocaryophyllene	Terpene
2	39.255	0.48	1(5)-Guaiene-11-ol	Terpene
3	39.943	0.47	Eudesmol <epi-γ->	Terpene
4	41.246	0.32	Bulnesol	Terpene
5	41.346	0.38	β-Eudesmol	Terpene
6	46.653	0.15	Cryptomeridiol	Terpene
7	47.296	0.15	Cryptomeridiol	Terpene
9	54.884	1.42	Cannabidivarin (CBDV)	Cannabinoid
11	60.659	93.43	Cannabidiol (CBD)	Cannabinoid
12	63.845	2.27	Cannabielsoin (CBE)	Cannabinoid

By : Maxime GODFROY

R&D Manager – PhD in Organic Chemistry


 2022.06.24
 13:04:08
 +02'00'

In direct comparison with other analytical methods or laboratory results may differ. This certificate of analysis is only valid for the batch submitted at the time of analysis.

LEAF cannot be held responsible for decisions made on the basis of the data presented. Any modification to this certificate of analysis is falsified and will be prosecuted.