

# CERTIFICATE OF ANALYSIS

## PRODUCT IDENTIFICATION

**CLIENT:** SP - PHYTOCOSMO 20%

**LOT** 1\_11\_20\_S831A

**RAW MATERIAL:** PCR Broad Spectrum Hemp Extract 85%

**RAW MATERIAL BATCH:** SL-21-BSE-02

**PRODUCT NAME:** Bulk Oil - BS/MCT - 20% - 1L – (prod 831)

**BATCH:** SLWL-21-BSE-02-002

**DDM :** 11/2023

## ORGANOLEPTIC ANALYZES

**APPEARANCE AND COLOR:** Viscous liquid, brown

**ODOR AND TASTE:** Conform to the standard

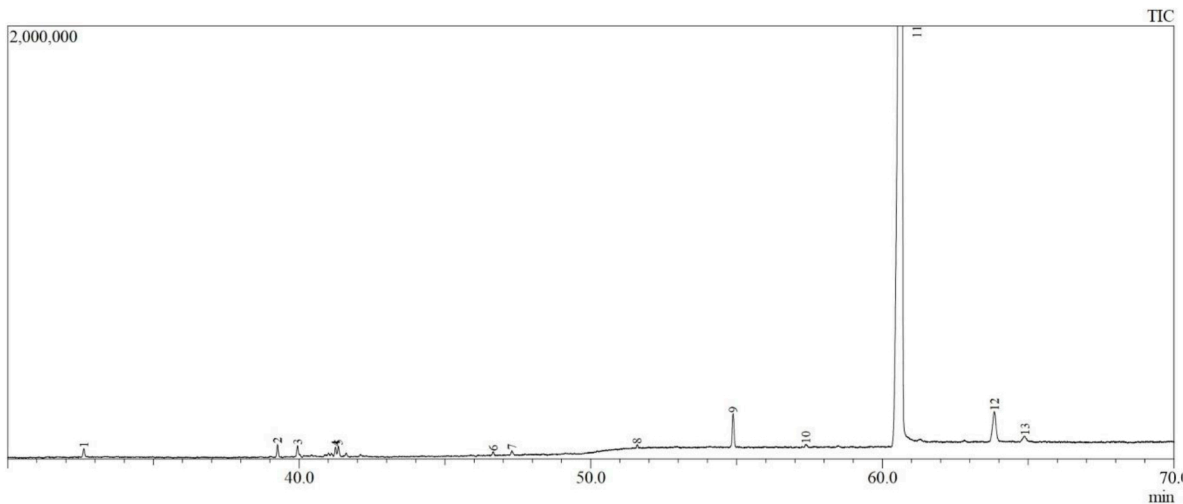
## PHYSICO-CHEMICAL ANALYSIS

**DENSITY (d<sub>20</sub>/20):** 0.965 ± 0.003

**QUANTITATIVE ANALYSIS :** HPLC Agilent 1220

Analyte	Method	LOD %	LOQ %	Mass %w-v
CBD	HPLC-LEAF04-SE	0.0242	0.0808	20.352
Δ <sup>9</sup> -THC	HPLC-LEAF04-SE	0.0242	0.0808	ND
CBG	HPLC-LEAF04-SE	0.0242	0.0808	ND
CBN	HPLC-LEAF04-SE	0.0242	0.0808	ND
THCV*	-	-	-	ND
Δ <sup>8</sup> -THC*	-	-	-	ND
ND : not detected				
NQ : not quantified				

*\*When analyzing the composition of the raw material batch SL-21-BSE-02 (GC-MS, LOD 500ppm), we did not detect THCV (Tetrahydrocannabidivarin) and Δ<sup>8</sup>-THC (Δ<sup>8</sup>-Tetrahydrocannabinol). We can therefore extrapolate by asserting that the finished product does not contain these two molecules.*



#Peak	Ret.Time (min)	Area % (relative %)	Name	Type of compound
1	32.615	0.32	Isocaryophyllene	Terpene
2	39.255	0.48	1(5)-Guaïen-11-ol	Terpene
3	39.943	0.47	Eudesmol <epi-γ>	Terpene
4	41.246	0.32	Bulnesol	Terpene
5	41.346	0.38	β-Eudesmol	Terpene
6	46.653	0.15	Cryptomeridiol	Terpene
7	47.296	0.15	Cryptomeridiol	Terpene
9	54.884	1.42	Cannabidivarin (CBDV)	Cannabinoid
11	60.659	93.43	Cannabidiol (CBD)	Cannabinoid
12	63.845	2.27	Cannabielsoin (CBE)	Cannabinoid

By : Florian BLAIN

Chemical Analysis Technician



2022.09.20

12:07:06

+02'00'

Laboratoire d'Études et d'Analyses des Fluides (LEAF)

31-33 rue du 8 Mai 1945 – 94470 BOISSY SAINT LEGER

Tel : 01 43 39 15 23 / E-mail : [contact@lab-leaf.com](mailto:contact@lab-leaf.com)

n° SIRET : 818 276 651 00028 – Au capital de 15 000€