

## CERTIFICATE OF ANALYSIS

### PRODUCT IDENTIFICATION

<b>CLIENT:</b> SP - PHYTOCOSMO 5%	<b>LOT</b> 1_09_5_S665
<b>RAW MATERIAL:</b> PCR Broad Spectrum Hemp Extract 85%	
<b>RAW MATERIAL BATCH:</b> SL-21-BSE-01	
<b>PRODUCT NAME:</b> Bulk Oil - BS/MCT - 5% - 665	
<b>BATCH:</b> SLWL-21-BSE-01-005	<b>DDM :</b> 03/2023

### ORGANOLEPTIC ANALYZES

<b>APPEARANCE AND COLOR:</b> Viscous liquid, pale yellow
<b>ODOR AND TASTE:</b> Conform to the standard

### PHYSICO-CHEMICAL ANALYSIS

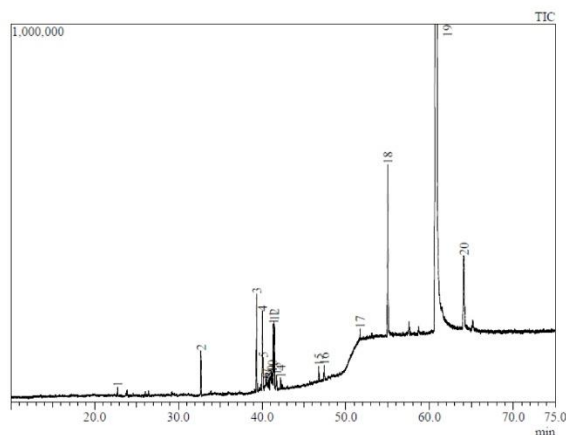
**DENSITY (d20/20):** 0.950 ± 0.003

**QUANTITATIVE ANALYSIS :** HPLC Agilent 1220

Analyte	Method	LOD %	LOQ %	Mass %w-v
CBD	HPLC-LEAF04	0.0015	0.0050	5.086
Δ9-THC	HPLC-LEAF04	0.0015	0.0050	ND
CBG	HPLC-LEAF04	0.0015	0.0050	ND
CBN	HPLC-LEAF04	0.0015	0.0050	NQ
THCV*	-	-	-	ND
Δ8-THC*	-	-	-	ND
ND : not detected				
NQ : not quantified				

*\*When analyzing the composition of the raw material batch SL-21-BSE-01 (GC-MS, LOD 500ppm), we did not detect THCV (Tetrahydrocannabivarin) and Δ8-THC (Δ8-Tetrahydrocannabinol). We can therefore extrapolate by asserting that the finished product does not contain these two molecules.*

Composition Analysis carried out on raw material batch (SL-21-BSE-01) (GC/MS) : GC/MS Shimadzu QP 2010 SE



Peak	Ret. Time (min)	Area %	Name	Type of compound
1	22.734	0.06	Linalool	Terpene
2	32.696	0.35	Caryophyllene <(E)->	Terpene
3	39.350	0.71	Guaiol	Terpene
4	40.042	0.61	Eudesmol <gamma->	Terpene
5	40.123	0.22	Caryophyllene oxide	Terpene
6	40.419	0.08	Eudesmol <gamma->	Terpene
7	40.523	0.14	Hinesol	Terpene
8	40.803	0.15	Humulene epoxide II	Terpene
9	41.118	0.16	Selina-3,11-dien-6-alpha-ol	Terpene
10	41.209	0.13	Caryophylla-4(12),8(13)-dien-5b-ol	Terpene
11	41.344	0.51	Bulnesol	Terpene
12	41.451	0.51	beta.-Eudesmol	Terpene
13	41.720	0.11	Costol <alpha->	Terpene
14	42.225	0.13	Caryophyllene oxide	Terpene
15	46.774	0.12	Cryptomeridiol	Terpene
16	47.415	0.13	Cryptomeridiol	Terpene
17	51.694	0.09	Cannabidiol (CBD-C1)	Cannabinoid
18	55.010	1.47	Cannabidiol (CBDV)	Cannabinoid
19	60.846	-	Cannabidiol (CBD)	Cannabinoid
20	64.096	1.29	Cannabielsoin (CBE)	Cannabinoid

By : Anne-Karine GROSDÉMANGE

Laboratory Manager – Chemical Analysis Engineer

**LEAF**  
LABORATOIRE D'ÉTUDES ET  
D'ANALYSES DES FLUIDES

2021.09.30

11:22:22

+02'00'

Laboratoire d'Etudes et d'Analyses des Fluides (LEAF)  
31-33 rue du 8 Mai 1945 – 94470 BOISSY SAINT LEGER  
Tel : 01 70 25 33 25 / E-mail : [contact@lab-leaf.com](mailto:contact@lab-leaf.com)  
n° SIRET : 818 276 651 00028 – Au capital de 15 000€