

CERTIFICATE OF ANALYSIS

PRODUCT IDENTIFICATION

CLIENT: SP - PHYCOSMO 20%	LOT 1_10_20_S696
RAW MATERIAL: PCR Broad Spectrum Hemp Extract 85%	
RAW MATERIAL BATCH: SL-21-BSE-02	
PRODUCT NAME: Bulk Oil - BS/MCT - 20% - 1L – (prod 696)	
BATCH: SLWL-21-BSE-02-001	DDM : 04/2023

ORGANOLEPTIC ANALYZES

APPEARANCE AND COLOR: Viscous liquid, dark orange

ODOR AND TASTE: Conform to the standard

PHYSICO-CHEMICAL ANALYSIS

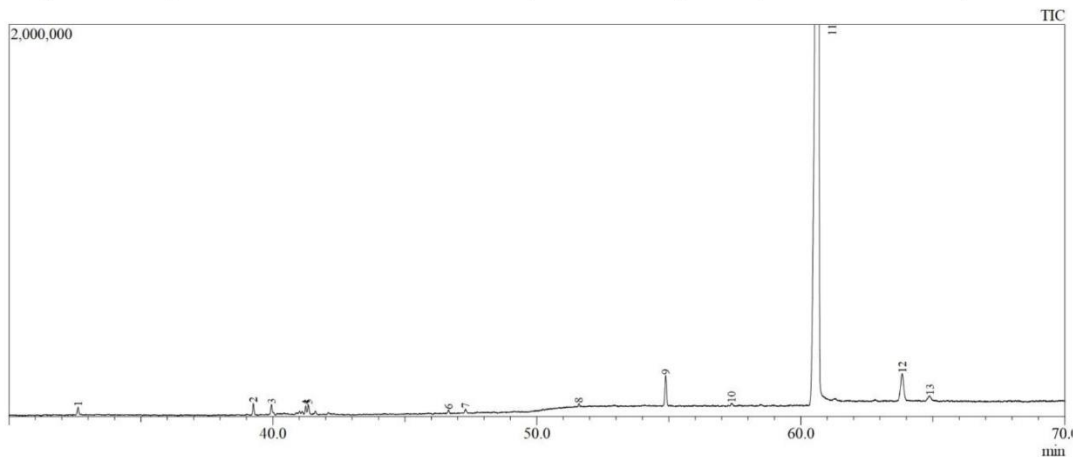
DENSITY (d20/20): 0.963 ± 0.003

QUANTITATIVE ANALYSIS : HPLC Agilent 1220

Analyte	Method	LOD %	LOQ %	Mass %w-v
CBD	HPLC-LEAF04-SE	0.0150	0.0500	20.085
Δ9-THC	HPLC-LEAF04-SE	0.0150	0.0500	ND
CBG	HPLC-LEAF04-SE	0.0150	0.0500	ND
CBN	HPLC-LEAF04-SE	0.0150	0.0500	ND
THCV*	-	-	-	ND
Δ8-THC*	-	-	-	ND
ND : not detected				
NQ : not quantified				

**When analyzing the composition of the raw material batch SL-21-BSE-02 (GC-MS, LOD 500ppm), we did not detect THCV (Tetrahydrocannabivarin) and Δ8-THC (Δ8-Tetrahydrocannabinol). We can therefore extrapolate by asserting that the finished product does not contain these two molecules.*

Composition Analysis carried out on raw material batch (SL-21-BSE-02) (GC/MS) : GC/MS Shimadzu QP 2010 SE



#Peak	Ret. Time (min)	Area % (relative %)	Name	Type of compound
1	32.615	0.32	Isocaryophyllene	Terpene
2	39.255	0.48	1(5)-Guaien-11-ol	Terpene
3	39.943	0.47	Eudesmol <epi-γ->	Terpene
4	41.246	0.32	Bulnesol	Terpene
5	41.346	0.38	β-Eudesmol	Terpene
6	46.653	0.15	Cryptomeridiol	Terpene
7	47.296	0.15	Cryptomeridiol	Terpene
9	54.884	1.42	Cannabidivarin (CBDV)	Cannabinoid
11	60.659	93.43	Cannabidiol (CBD)	Cannabinoid
12	63.845	2.27	Cannabielsoin (CBE)	Cannabinoid

By : Anne-Karine GROSDÉMANGE

Laboratory Manager – Chemical Analysis Engineer

LEAF
LABORATOIRE D'ÉTUDES ET
D'ANALYSES DES FLUIDES

2021.10.19

13:32:35

+02'00'

Laboratoire d'Etudes et d'Analyses des Fluides (LEAF)
31-33 rue du 8 Mai 1945 – 94470 BOISSY SAINT LEGER
Tel : 01 70 25 33 25 / E-mail : contact@lab-leaf.com
n° SIRET : 818 276 651 00028 – Au capital de 15 000€