

CERTIFICATE OF ANALYSIS

PRODUCT IDENTIFICATION

CLIENT: SP - PHYTOCOSMO 10%

LOT 1_11_10_S830A

RAW MATERIAL: PCR Broad Spectrum Hemp Extract 85%

RAW MATERIAL BATCH: SL-21-BSE-02

PRODUCT NAME: Bulk Oil - BS/MCT - 10% - 1L – (prod 830)

BATCH: SLWL-21-BSE-02-002

DDM : 11/2023

ORGANOLEPTIC ANALYZES

APPEARANCE AND COLOR: Viscous liquid, brown

ODOR AND TASTE: Conform to the standard

PHYSICO-CHEMICAL ANALYSIS

DENSITY (d₂₀/20): 0.954 ± 0.003

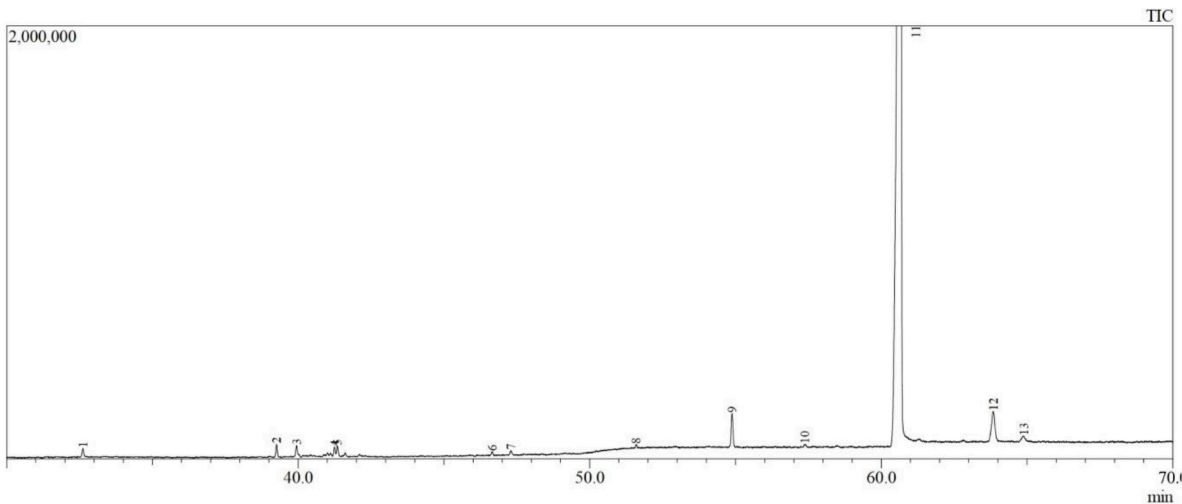
QUANTITATIVE ANALYSIS : HPLC Agilent 1220

Analyte	Method	LOD %	LOQ %	Mass %w-v
CBD	HPLC-LEAF04-SE	0.0240	0.0800	10.232
Δ9-THC	HPLC-LEAF04-SE	0.0240	0.0800	ND
CBG	HPLC-LEAF04-SE	0.0240	0.0800	ND
CBN	HPLC-LEAF04-SE	0.0240	0.0800	ND
THCV*	-	-	-	ND
Δ8-THC*	-	-	-	ND

ND : not detected

NQ : not quantified

**When analyzing the composition of the raw material batch SL-21-BSE-02 (GC-MS, LOD 500ppm), we did not detect THCV (Tetrahydrocannabivarin) and Δ8-THC (Δ8-Tetrahydrocannabinol). We can therefore extrapolate by asserting that the finished product does not contain these two molecules.*



#Peak	Ret.Time (min)	Area % (relative %)	Name	Type of compound
1	32.615	0.32	Isocaryophyllene	Terpene
2	39.255	0.48	1(5)-Guaïen-11-ol	Terpene
3	39.943	0.47	Eudesmol <epi-γ>	Terpene
4	41.246	0.32	Bulnesol	Terpene
5	41.346	0.38	β-Eudesmol	Terpene
6	46.653	0.15	Cryptomeridiol	Terpene
7	47.296	0.15	Cryptomeridiol	Terpene
9	54.884	1.42	Cannabidivarin (CBDV)	Cannabinoid
11	60.659	93.43	Cannabidiol (CBD)	Cannabinoid
12	63.845	2.27	Cannabielsoin (CBE)	Cannabinoid

By : Florian BLAIN

Chemical Analysis Technician



2022.09.2

0 12:04:50

+02'00'

Laboratoire d'Études et d'Analyses des Fluides (LEAF)

31-33 rue du 8 Mai 1945 – 94470 BOISSY SAINT LEGER

Tel : 01 43 39 15 23 / E-mail : contact@lab-leaf.com

n° SIRET : 818 276 651 00028 – Au capital de 15 000€