

## CERTIFICATE OF ANALYSIS

n°2023-OA8374

## PRODUCT IDENTIFICATION

CLIENT: SP - PHYTOCOSMO 20 %

LOT 23\_01\_20\_S2143

RAW MATERIAL: OPTIMA BROAD EXTRACT XN

RAW MATERIAL BATCH: SL-23-OPXN/BE-01

PRODUCT NAME: Bulk Oil | OPXNBE/MCT OIL | 20%– (prod 2143)

BATCH: SEWL-23-OPXNBE/MCT OIL-20%-01-001

DDM: 01/2025

## ORGANOLEPTIC ANALYZES

APPEARANCE AND COLOR: Viscous liquid, Yellow

ODOR AND TASTE: Conform to the standard

## PHYSICO-CHEMICAL ANALYSIS

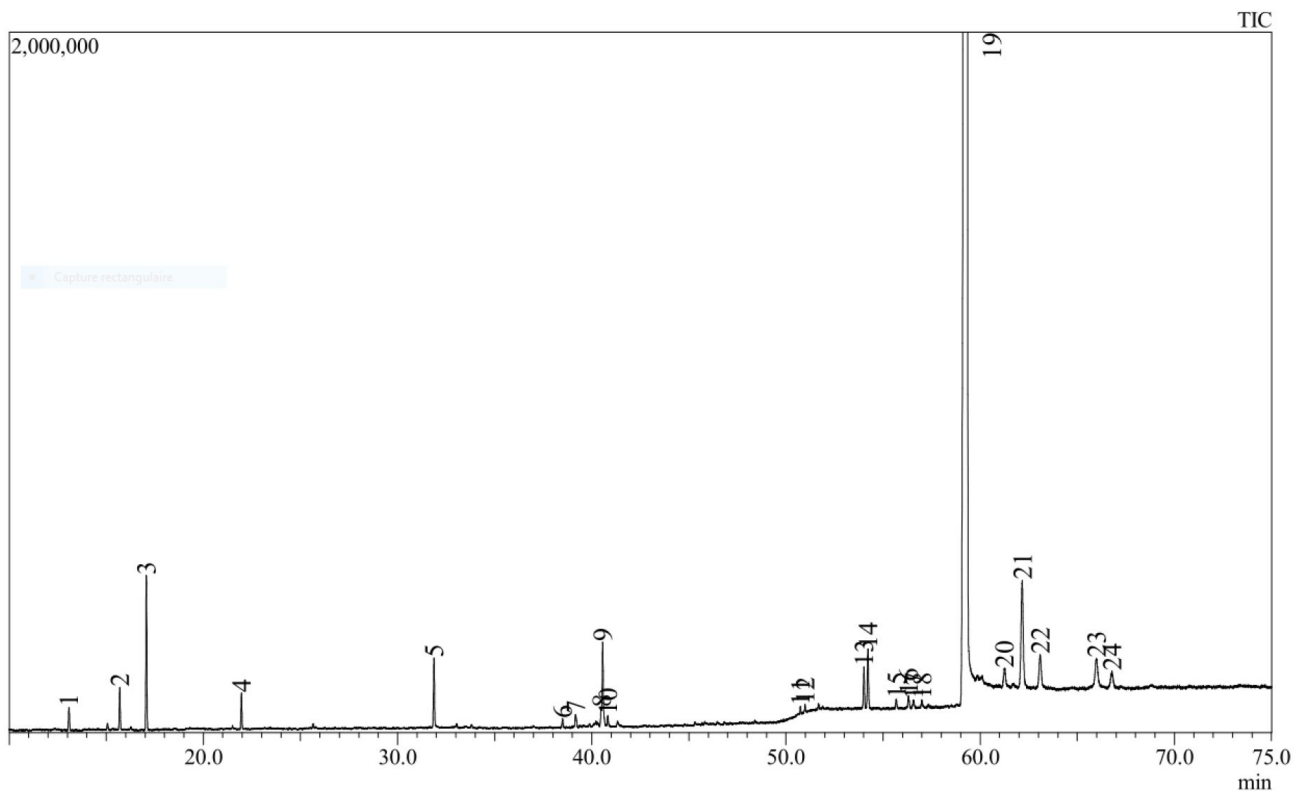
DENSITY (d<sub>20/20</sub>): 0.962 ± 0.003

QUANTITATIVE ANALYSIS : HPLC-DAD Shimadzu

Analyte	Method	LOD %	LOQ %	Mass %w-v
CBD	HPLC-LEAF06-SE	0.0600	0.2000	20.176
Δ <sup>9</sup> -THC	HPLC-LEAF06-SE	0.0600	0.2000	ND
CBG	HPLC-LEAF06-SE	0.0600	0.2000	NQ
CBN	HPLC-LEAF06-SE	0.0600	0.2000	ND
THCV*	-	-	-	ND
Δ <sup>8</sup> -THC*	-	-	-	ND

ND : not detected  
NQ : not quantified

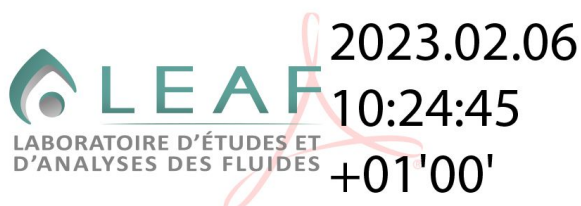
*\*When analyzing the composition of the raw material batch SL-23-OPXN/BE-01 (GC-MS, LOD 500ppm), we did not detect THCV (Tetrahydrocannabivarin) and Δ<sup>8</sup>-THC (Δ<sup>8</sup>-Tetrahydrocannabinol). We can therefore extrapolate by asserting that the finished product does not contain these two molecules.*



#Peak	Ret. Time min	Area % (relative)	Name	Type of compound
1	13.071	0.28	$\alpha$ -Pinene	Terpene
2	15.064	0.09	$\beta$ -Pinene	Terpene
3	15.690	0.42	Myrcene	Terpene
4	17.057	1.55	Limonene	Terpene
5	21.956	0.34	Linalool	Terpene
6	31.868	0.72	(E)-Caryophyllene	Terpene
7	38.493	0.10	1(5)-Guaien-11-ol	Terpene
8	39.157	0.18	$\gamma$ -epi-Eudesmol	Terpene
9	40.484	0.14	Bulnesol	Terpene
10	40.558	0.82	$\alpha$ -Bisabolol	Terpene
11	40.813	0.09	4(15),5,10(14)-Germacatrien-1-ol	Terpene
12	50.735	0.07	Phytol	Terpene
13	50.971	0.05	Cannabidiol (CBD-C1)	Cannabinoid
14	54.011	0.38	Cannabidivarine (CBDV)	Cannabinoid
15	54.218	0.61	MW-314 Unknow A	Cannabinoid
16	55.680	0.12	MW-314 Unknow B	Cannabinoid
17	56.311	0.16	Cannabidibutol (CBDDB)	Cannabinoid
18	56.555	0.11	MW-314 Unknow C	Cannabinoid
19	57.001	0.08	Cannabicyclol (CBL)	Cannabinoid
20	59.294	90.16	Cannabidiol	Cannabinoid
21	61.256	0.31	MW-314 Unknow E	Cannabinoid
22	62.151	1.73	Isomère 1 de Cannabielsoin (CBE)	Cannabinoid
23	63.074	0.54	Isomère 1 de Cannabielsoin (CBE)	Cannabinoid
24	65.966	0.58	Cannabigerol (CBG)	Cannabinoid
25	66.764	0.37	Cannabinol	Cannabinoid

By: Florian BLAIN

Chemical Analysis Technician



In direct comparison with other analytical methods or laboratory results may differ. This certificate of analysis is only valid for the batch submitted at the time of analysis.

LEAF cannot be held responsible for decisions made on the basis of the data presented. Any modification to this certificate of analysis is falsified and will be prosecuted.

Laboratoire d'Etudes et d'Analyses des Fluides (LEAF)  
31-33 rue du 8 Mai 1945 – 94470 BOISSY SAINT LEGER  
Tel : 01 43 39 15 23 / E-mail : [contact@lab-leaf.com](mailto:contact@lab-leaf.com)  
n° SIRET : 818 276 651 00028 – Au capital de 15 000€